



Commonwealth Healthcare Corporation

CNMI Weekly Syndromic Surveillance Report



EPI WEEK 31

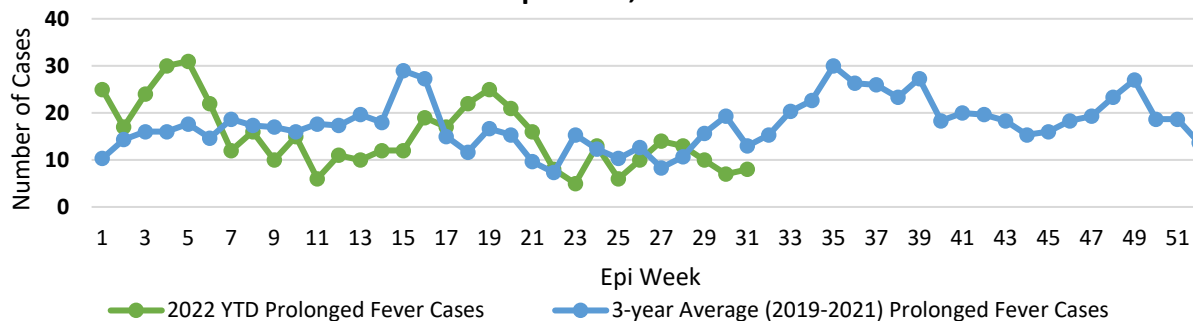
EPI WEEK DATE: July 31 - August 06, 2022

Clinic	Influenza-Like-Illness (ILI)		Diarrhea (DIA)		Prolonged Fever (PF)		Acute Fever and Rash (AFR)		Total Encounters	
	Last week	Current week	Last week	Current week	Last week	Current week	Last week	Current week	Last week	Current Week
CHCC Family Care Clinic	0	0	1	2	0	0	0	0	487	214
CHCC Women's Clinic	0	0	0	0	0	0	0	0	60	118
CHCC Children's Clinic	9	5	0	1	1	4	4	2	157	161
CHCC Emergency Room	4	15	9	8	5	3	5	7	403	424
Kagman Isla Community Health	2	2	0	0	0	0	0	0	238	192
Tinian Isla Community Health	0	0	0	0	0	0	0	0	0	27
CHCC Tinian Health Center	0	1	1	1	1	1	0	0	123	87
CHCC Rota Health Center	0	0	0	0	0	0	0	0	96	100
	15	23	11	12	7	8	9	9	1564	1323

KEY TAKEAWAYS

- **15% Decrease** in **Total Encounters** from the last epi week to the current epi week.
- **25% Decrease** in **COVID-19 cases** were seen this epi week (#31) compared to the average of the previous 3 epi weeks (#30, 29, & 28).
- **47% Increase** in **Influenza-like cases** were seen this epi week (#31) compared to the average of the previous 3 epi weeks (#30, 29, & 28).

Total Number of Prolonged Fever Cases Reported at CNMI Sentinel Sites by Epi Week, 2022



ALERTS AND TRENDS

- ILI: Increased from previous week
- PF: Stable from previous week
- AFR: Stable from previous week
- DIA: Stable from previous week

Syndromes	Epi Week				% Change from current week to previous 3 weeks	COVID Hospitalizations	
	31	30	29	28		Date Range	Totals
Acute Fever and Rash	9	9	11	9	Unstable	July 31 – August 06, 2022	3
Prolonged fever	8	7	10	13	-20%	July 24 – July 30, 2022	0
Influenza-like illness	23	15	14	18	-47%	11/09/2021 – 07/30/2022	266
Diarrhea	12	11	14	15	-10%		



Commonwealth Healthcare Corporation

CNMI Weekly OD2A Surveillance Report



EPI WEEK31 | EPI WEEK DATE: JULY 31 – AUGUST 6, 2022

POLY-SUBSTANCE*	
PS OD	PS MISUSE
0	0

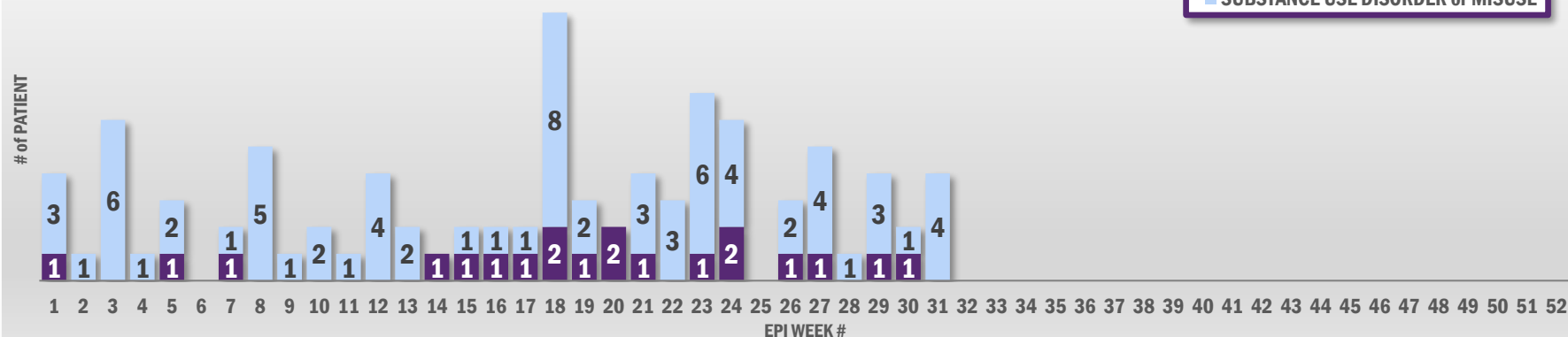
OPIOID				
OP OD	OUD	S/P OUD	OP MISUSE	S/P OP MISUSE
0	0	0	0	1

STIMULANT				
ST OD	SUD	S/P SUD	ST MISUSE	S/P ST MISUSE
0	0	0	2	1

OTHER
OS OD
0

*Poly-Substance encounters are also counted under respective categories.

OD2A SURVEILLANCE: PATIENT by EPI WEEK 2022



ACRONYMS			
FATAL / NON-FATAL CASE		OUD, SUD or MISUSE	Confirmed Poly-Substance Misuse
PS OD	Poly-Substance Overdose		Confirmed Opioid Use Disorder or Opioid Misuse
OP OD	Opioid Overdose		Confirmed Stimulant Use Disorder or Stimulant Misuse
ST OD	Stimulant Overdose	S/P OUD, SUD or MISUSE	Suspected Opioid Use Disorder or Opioid Misuse
OS OD	Other Substance Overdose		Suspected Stimulant Use Disorder or Stimulant Misuse

REPORTING SITE:

ED - Emergency Department, CHCC;
CC - Children's Clinic, CHCC; **FCC** - Family Care Clinic, CHCC;
WC - Women's Clinic, CHCC;
THC - Tinian Health Clinic, CHCC; **RHC** - Rota Health Center, CHCC;
KICH - Kagman Isla Community Health; **TICH** - Tinian Isla Community Health



Overdose Data to Action Program
 Suite 305, Marina Heights II Bldg.
 P.O. Box 500409, Saipan, MP 96950
 TEL: (670) 322-0061 | Email: od2a@chcc.health



Commonwealth Healthcare Corporation

CNMI Weekly Notifiable Disease Report



EPI WEEK 31

EPI WEEK DATE: July 31 - August 06, 2022

In the table below, weekly and year to date counts are displayed through epi week 31. Additionally, a 3-year weekly average of incident counts comparing the incident count for this time period to the average of the previous 3 years (2019-2021) is included as well as incident rates for conditions that have counts greater than 20. Rates cannot be calculated for counts less than 20 due to statistical unreliability.

Condition	Epi Week 30	2022 YTD	3-year weekly average incident counts	2022 YTD Incident Rate*	2021 Incident Rate*
Enteric					
Campylobacter	2	17	0	35.9	29.6
Ciguatera fish poisoning	0	2	1	4.2	33.8
Salmonella	0	12	0	25.4	25.4
Environmental					
Elevated Blood Lead Levels	1	5	0	10.6	31.7
Sexually Transmitted					
Chlamydia	4	123	3	259.9	437.4
Gonorrhea	0	6	0	12.7	35.9
Syphilis	0	0	0	0.0	6.3
Respiratory					
COVID-19	133	9326	4	19704.6	6757.0
Post-Vaccine	63	6303	1.4	13317.4	4198.3
Tuberculosis					
TB, Confirmed	0	6	1	12.7	74.0
TB, Under Investigation	0	14	0.73	29.6	44.4

*Rate per 100,000; Data are preliminary and subject to change. CNMI population estimates were determined using 2021 Census International Database (https://www.census.gov/data-tools/demo/idb/#/country?YR_ANIM=2021&COUNTRY_YR_ANIM=2021&FIPS_SINGLE=CQ)



Commonwealth Healthcare Corporation

CNMI Weekly COVID-19 Surveillance Report

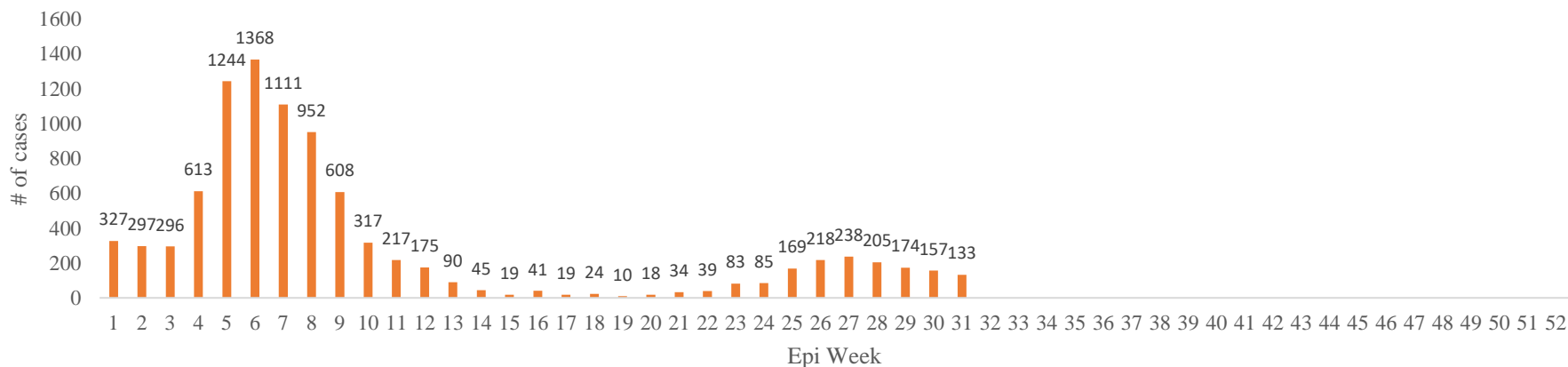


EPI WEEK 31

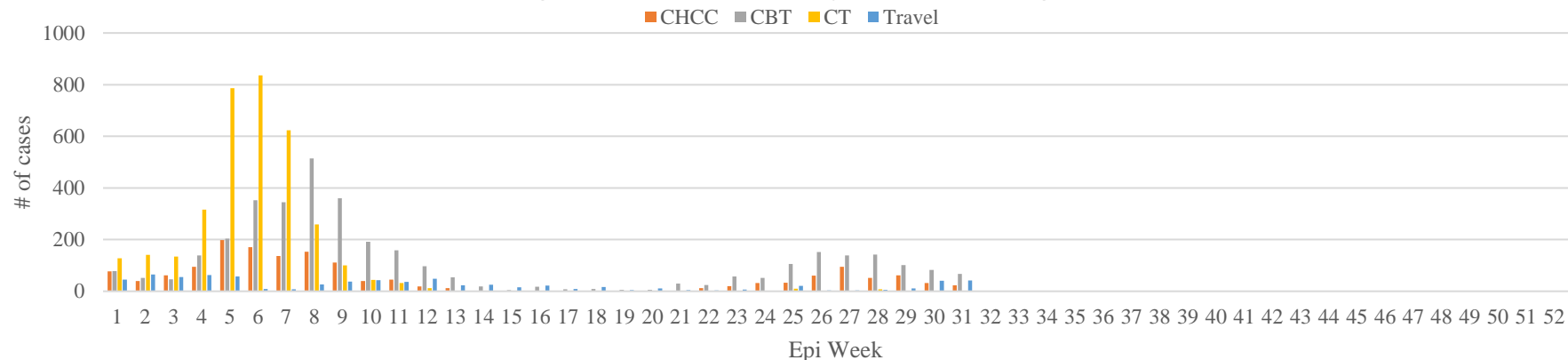
EPI WEEK DATE: July 31 - August 06, 2022

For additional COVID-19 data, please visit this link: <https://chcc.datadriven.health/ui/99/dashboard/cbaeede2-4f75-11eb-b380-0242ac1d004a>

Covid-19 Cases Reported, January 02, 2022 - August 06, 2022



Covid-19 Diagnoses Source, January 02, 2022 - August 06, 2022



For **COVID-19 vaccination data**, please visit this link: <https://www.vaccinatecnmi.com/vax-dashboard/>

*Data are preliminary and subject to change.



Commonwealth Healthcare Corporation

CNMI Weekly Health & Vital Statistics Report



REPORTING PERIOD: EPI YEAR 2022 as of EPI WEEK 31

The statistics on births, deaths, and causes of deaths in this report are derived from birth and death registrations processed daily at the Health and Vital Statistics Office.

- **Number of births:** 9 (279)
- **Average:** 9 (per week)
- **Infections present and/or treated during pregnancy:**
 - Chlamydia: 1 (16)
 - Gonorrhea: 0 (1)
 - Syphilis: 0 (0)
 - Hepatitis B: 0 (2)
 - Hepatitis C: 0 (1)
 - COVID-19: 0 (28)
- **Substance use during pregnancy:**
 - Cigarette smoking: 0 (13)
 - Betelnut chewing: 2 (55)
 - Betelnut chewing + tobacco: 2 (54)
 - Alcohol use: 0 (0)
 - Drug use: 0 (3)
- **Maternal risk factors in pregnancy:**
 - Pre-pregnancy DM: 1 (7)
 - Gestational DM: 2 (40)
 - Pre-pregnancy HTN: 0 (3)
 - Gestational HTN: 0 (15)

- **Number of deaths:** 4 (171)
- **Average:** 6 (per week)
- **Number of deaths who received COVID-19 vaccine:**

Age range:	< 5	≥ 5	12-17	18 & over
Nº of death	1 (5)	0 (0)	0 (1)	4 (165)
Nº Vaccinated	0 (0)	0 (0)	0 (0)	1 (108)
% Vaccinated	0%	0%	0%	65%

Note: On 06/18/2022, CDC approved children aged 6 months to under 5 years-old to receive the COVID-19 vaccine.

- **COVID-19 related deaths:** 0 (23)
 - COVID-19 as underlying cause of death: 0 (19)
 - COVID-19 as other contributing condition:* 1 (5)
*** Reported as other significant conditions contributing to death but NOT resulting in the underlying cause
- **Opioid related deaths:** 0 (0)
- **Top 5 Leading Causes of Death:**
 - Diseases of the circulatory system: 1 (53)
 - Neoplasms: 0 (27)
 - Codes for special purposes (COVID-19): 0 (19)
 - Endocrine, nutritional and metabolic diseases: 0 (12)
 - Symptoms, signs and abnormal clinical and Laboratory findings, not elsewhere classified: 0 (10)
 - All other causes: 3 (50)

Data source: Electronic Vital Registration System (EVRS)

